

MESSAGE FROM THE CHAIR

As we were hoping for in 2009, the forest sector economy dramatically improved through 2010. Western Forest Products (WFP) has returned to a more profitable status and employment on the Defined Forest Area (DFA) has increased. This turn of events, strongly support the viability of our communities associated with the DFA of Block 2 of TFL 39. 2010 also saw a return to log sorting and dumping at the Kelsey Bay dryland sort and the community of Kelsey Bay is happy about this. We are all excited to see the flow of benefits to our local areas improve after several difficult years.

As in past years, MIFLAG has repeatedly emphasized the need to be vigilant to uphold the values put forward through MIFLAG in the efforts towards sustainable forests and sustainable communities. It is paramount that we continue to do this in the interests of our communities, our economy and for our environment.

Communications between WFP and the MIFLAG stakeholders and First Nations continues on a regular schedule. The past year has brought with it a renewed challenge to implement the new Canadian Standards Association standard. It is called CSA Z809-08 and moves us along the path of 'continual improvement'. CSA Z809-08 replaces the former CSA Z809-06 standard and "outlines the requirements for a forest manager... to implement the public participation, system requirements, and performance requirements for a Defined Forest Area (DFA)." It has a 'core' set of things to be measured and allows for continued flexibility in representing 'local values' of MIFLAG in the process.

During 2010 MIFLAG held 5 regular meetings, 3 workshops, 1 field trip, 1 public outreach event and a Christmas gathering. Much of our efforts were spent in workshop style sessions to review past indicator performance and develop and adopt new CSA Z809-08 criteria and indicators.

The guest speaker at the Christmas gathering was Ms. Glynnis Horel. Her impassioned PowerPoint presentation on the Western Forest Products TFL39 Block 2 Watershed Assessment was a performance to be remembered as she moved about at the front of the decorated Christmas table of MIFLAG members and their partners, musing about the intricacies of 'activated alluvial floodplains' and naturally functioning systems. MIFLAG has been consistently interested in watershed management on the DFA and this Christmas presentation was welcomed by our membership. Thank you to WFP.

MIFLAG membership was relatively consistent in 2010, however, First Nation participation wavered. MIFLAG continues to express a strong will to have First Nations involvement in MIFLAG in whatever for First Nations wish. We are hopeful that with continued outreach and welcoming openness, that First Nation involvement will increase over time. The members continually review stakeholder and First Nation representation and the MIFLAG Terms of Reference to ensure full representation of community and First Nation values.

We are all pleased with the improvement in the forest sector economy and the opportunities it brings for employment and other local community benefits. I encourage all MIFLAG members to continue efforts on behalf of your First Nations, your communities, and your stakeholder groups.

Thank you to the MIFLAG members for continuing to represent the values of your sectors, First Nations and communities towards sustainable forest management and sustainable communities.

Thank you to WFP for being responsive to the MIFLAG table with access to information, technical support and providing for our needs in making public participation in this Forest Certification process meaningful and accountable.

As always, it is indeed an honour and a privilege to facilitate and chair such a dedicated group of volunteers.

For More Information:

Ronald Frank, R.P.F., MIFLAG Facilitator/Chair.
Phone: (250) 338-9717 Fax: (250) 338-5604
E-mail: shelter@island.net

May 19, 2011

ISO 14001



MIFLAG 2010 Annual Report



Mid Island Forest Lands Advisory Group (MIFLAG) is an independent body providing organized and regular input to the development, implementation and ongoing improvement of Western Forest Products' Sustainable Forest Management (SFM) system at Mid Island Forest Operations.

Input comes from a range of First Nation and Stakeholder representatives from the surrounding communities, including Sayward, Campbell River, Comox and Cape Mudge. The Canadian Standards Association Z809 (CSA Z809-2008) forest certification forms the core of MIFLAG's activities.

The land base on which MIFLAG advises Western Forest Products is called the Defined Forest Area (DFA) and includes 157,500 hectares of provincial crown forest land within Block 2 of Tree Farm Licence 39, including much of the Salmon River and Amor de Cosmos watersheds.

The strength of this process lies in the auditing by Third Party Auditors to ensure compliance with agreed measurables, which are called Indicators. MIFLAG currently has 43 indicators measuring a range of items from respect for First Nations values, public education and outreach, to Stakeholder and First Nations satisfaction with the process, replanting, and many others. These have been developed and agreed to by MIFLAG in an effort to measure continued improvement in Sustainable Forest Management and to truly reflect the community values expressed by MIFLAG.

Since May 1999 MIFLAG has successfully passed all audits and continues to express our community and First Nations values through this forest certification process.



Mid Island Forest Lands Advisory Group

MEMBERSHIP

2010 saw most MIFLAG members continue on in service with MIFLAG. There were new members who joined in to replace those leaving. We have some members who have been faithful participants with MIFLAG since it's inception in 1999: Lynn Nash, Seniors Representative; Richard Glover, Sayward Fish & Game, and Clay Carlson, Education.

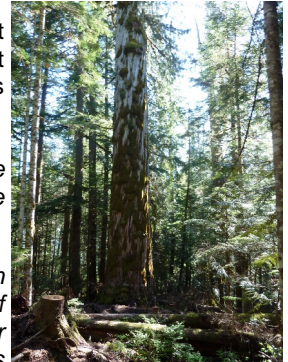
Our thanks to all of those who have given so freely of their time and energy in an effort for sustainable forest management and sustainable communities. Thank you also to the families of these members who support them in their efforts.

<u>ACTIVE MEMBERS</u>		<u>OBSERVER STATUS</u>	
Chief John Smith	Tlowitsis First Nation	John Andres	Ministry of Forests
Rod Naknakim	Hamatla Treaty Society	<u>STANDING MEMBERS</u>	
Lynn Nash	Seniors' Representative	Cindy Fife R.P.F	Operations Forester responsible for the Public Advisory process at WFP Mid Island Operation
Maureen Brinson	Community Member at Large	Tony Clark, R.P.F	Area Engineer, WFP, Mid Island Operation
Melissa Quocksister	K'omok's First Nation	Jeff Ternan, R.P.F / Ken Mackenzie, R.P.F*	Operations Manager, WFP, Mid Island Operation
Rick Wangler	United Steelworkers Local 1-363	Michel deBellefeuille, R.P.F	Corporate Certification Coordinator
Colin Buss	Chamber of Commerce	<u>ALTERNATES</u>	
Richard Glover	Sayward Fish and Game Club	Mary Storry	Regional District of Strathcona
Morgan Ostler	City of Campbell River	Bill West-Sells	Sayward Fish and Game Club
Kelly Arkell	Forest Contractors to Western	Colleen Evans	Chamber of Commerce
Melinda Martin	Suppliers to Western	Norm Kirschner	Village of Sayward
Sandra Barnes	C.R. Environmental Committee	<u>ADMINISTRATIVE SUPPORT TO MIFLAG</u>	
Clay Carlson	Timberline Secondary School Education	Nicole Flohr	Recording Secretary / Administrative
Gerald Whalley	Regional District of Strathcona	Ronald Frank, R.P.F	Facilitator / Chair
Rosemary Croteau	Village of Sayward		

*(Indicates MIFLAG members who left MIFLAG during 2010)

MIFLAG MEMBERS SPEAK

MIFLAG works by consensus but our members have their stakeholder/First Nation and their own viewpoints and specific key values, which they represent to the MIFLAG table. Looking back at 2010 this is what some of our members had to say:



Sayward Fish and Game: *Sayward Fish and Game much appreciated the logs donated by WFP for boat ramp floats. It is good to see activity at the Kelsey Bay dryland sort again.*

Campbell River Chamber of Commerce: *I became a member of MIFLAG in November 2009 as the 2nd VP with the Campbell River and District Chamber of Commerce. Thankfully, WFP rejoined the Chamber again in 2010. Chamber President Gary Thulin, provided a letter to WFP explaining the Chamber's position on the issue of cut control in the Forest Act. Highlights in 2010 were the spring field trip visit to the Admiral Broeren tree and the awesome and educational talk by Glynnis Horel on watershed management at the Christmas gathering.*

K'omoks First Nation: *Since 2009 I have been participating when I can in the MIFLAG. I think this is a valuable experience for me as a young person emerging into band leadership. I also think that it is important for other First Nation representatives to participate so that we all know what is going on in our forests. Every forest, park and woodlot on Vancouver Island is within a traditional territory of a First Nation.*

City of Campbell River: *As members representing a broad spectrum of the community our Advisory Group are consistently concerned about the high recreational values the public upholds on the DFA lands. WFP staff respect those concerns and work effectively with MIFLAG on protection, enhancement and new development of recreation sites. This process is a vital function as advisors to WFP.*

K'omoks First Nation: *Since 2009 I have been participating in the MIFLAG when I can. I think this is a valuable experience for me as a young person emerging into K'omoks First Nation leadership. I also think it is important for other First Nation representatives to participate so that we all know what is going on in our forests. Every forest, park and woodlot on Vancouver is within a traditional territory of a First Nation.*

Campbell River Environmental Committee: *I am very happy to see that this process is becoming more and more streamlined and efficient in the way MIFLAG is moving forward into the future. I find it much easier to follow and understand the indicators and the changes being put forward.*

Western Forest Products: *Western Forest Products continues to implement CSA standards and indicators using well designed procedures to create safe roads and take precautions planning water course viability. WFP modifies cut blocks to lessen windfall and impacts on wildlife plants, birds, animals and fish habitat that is visible on tours. Discussion of changes made to criteria and data continues to define WFP's future job and responsibilities.*



Seniors' Representative: *The MIFLAG has undergone many changes over the past 10 years as a result of new technology, new union contracts and negotiations, an ageing work force produced by layoffs in the industry, a weakened export economy, treaty negotiations and other factors. The focus of our Quality Indicators has changed somewhat from a main focus on logging practices to the entire spectrum of sustainable forest management. This change in focus presents many challenges to the Company and to the Advisory Group in attempting to balance the costs of doing business with the new emphasis on "gentle forest management". It is a fascinating "ride" for the members of the MIFLAG.*